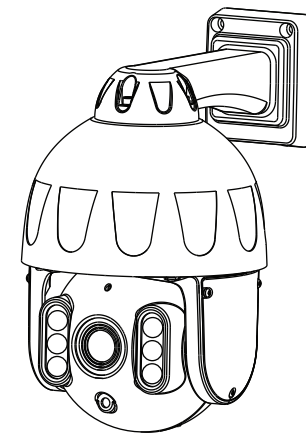


Quick Setup Guide

Outdoor PoE Live Streaming Camera

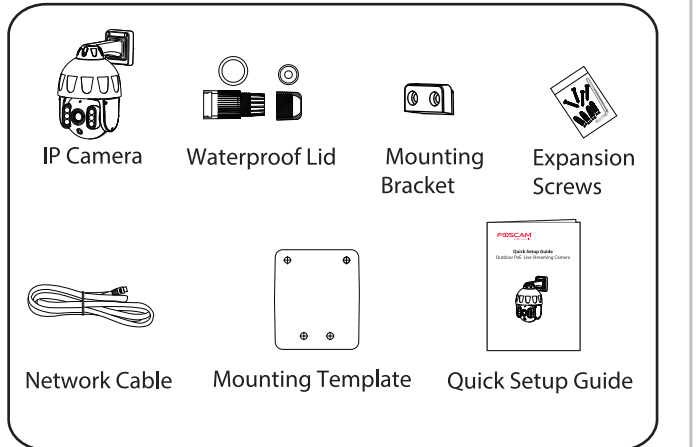


To view this guide in other languages (e.g. Nederlands, Deutsch, Français, Español), and for detailed manuals, tools, etc., please visit foscam.com/downloads.

Setting Up Your Foscam Security Camera

1 Getting Started

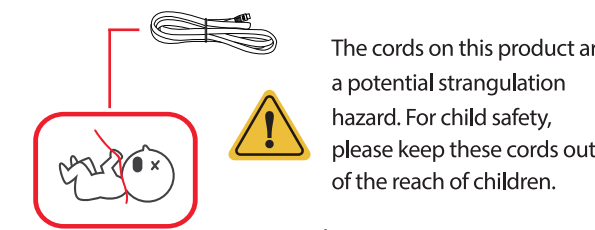
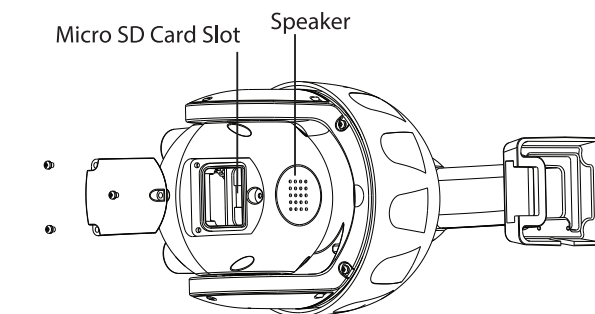
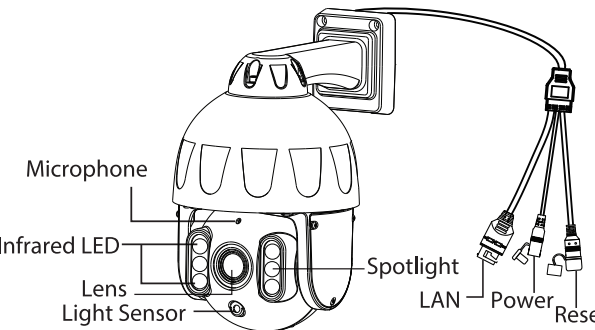
Package Contents



Safety Tips

- Please change the camera's password regularly, using a combination of numbers, letters and special characters.
- We recommend that you regularly update your camera with the latest available software and firmware to ensure the best experience with your camera.
- Please ensure that the proper power supply is used before using the camera.
- Do not disassemble, repair or modify the product.
- Do not use the product if the casing has been broken. Danger of electric shock.
- Please install the camera securely using the screws provided.
- Change the default port in your camera to a port in the higher range to improve the security of your connection.
- To avoid the risk of fire or electric shock, please keep your camera connectors in a cool, dry place.
- Please keep the camera out of reach of small children.
- Operating Temperature: -20°C ~50°C (-4°F ~122°F).

2 Physical Description



The cords on this product are a potential strangulation hazard. For child safety, please keep these cords out of the reach of children.

3 Setting Up Your Camera: Wired Connection via the Foscam App (Recommended)

Before You Get Started

Scan the QR code below to download and install the Foscam APP.



To ensure a smoother video experience on your smart phone, it is recommended that your smart phone meet the following specifications:

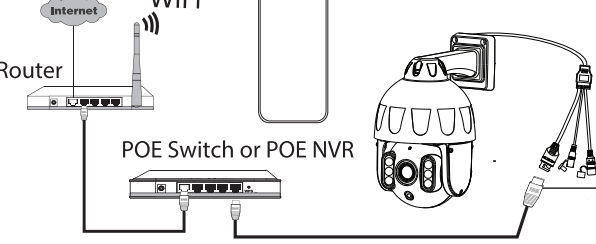
- iOS: version 11 or higher.
- Android: 5.0 or higher, using a device with a Graphics Processing Unit (GPU).

Note: For the best experience, please update the APP to the latest version!

Wired Connection

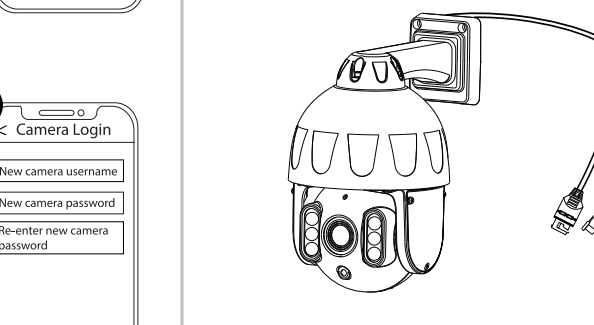
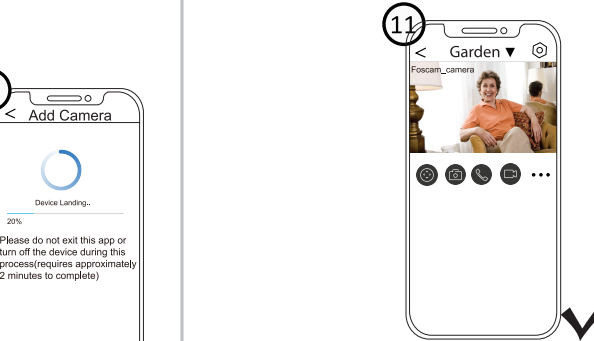
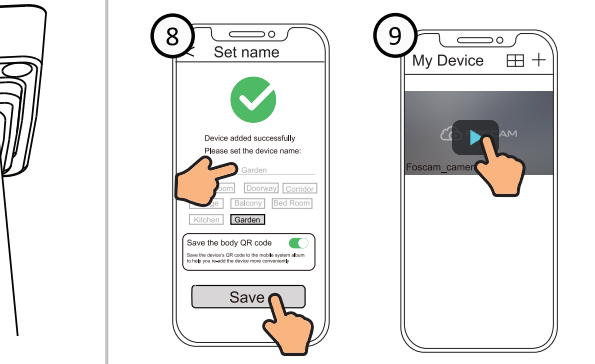
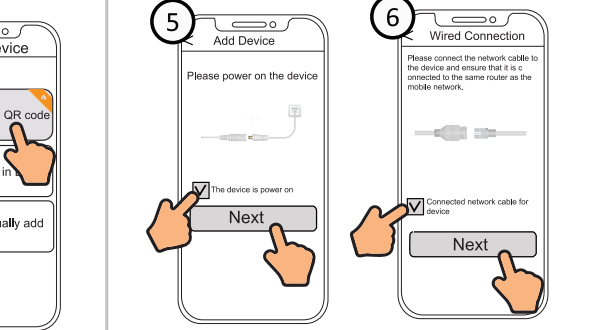
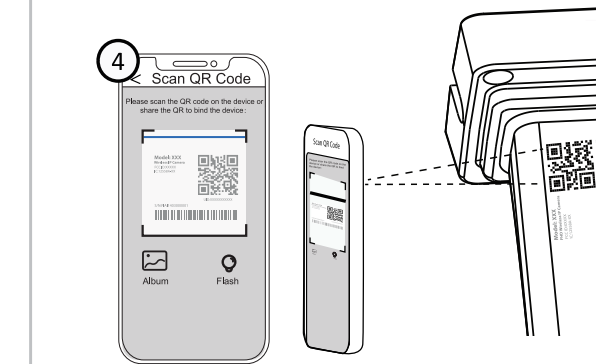
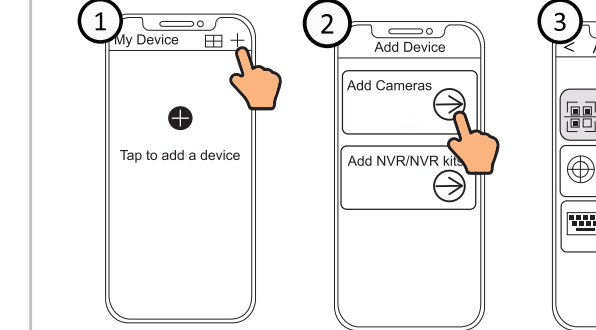
1. Connect the camera to your POE Switch or POE NVR with an Ethernet cable, and please wait for a few seconds until hearing the "Wired connection succeeded".
2. Make sure your smart phone is connected to the same WiFi network as the camera.

4. Follow the steps below:



Tips: Please make sure that the smartphone and camera are on the same Wi-Fi.

3. Open the Foscam APP and please register a Foscam account, or sign in if you have one already.



Note: If the adding process fails, please reset your camera and try adding again according to the above method.

4 PC Access Your Camera

Foscam VMS

Foscam VMS is a new tool for PCs. It does not require plug-ins and is compatible with Windows & Mac, supporting all Foscam HD cameras and up to 36 cameras at the same time. If you would like to manage multiple cameras, we suggest you install Foscam VMS. You can download the "Foscam VMS" Windows version from foscam.com/vms, and can download the "Foscam VMS" Mac version from the APP store:

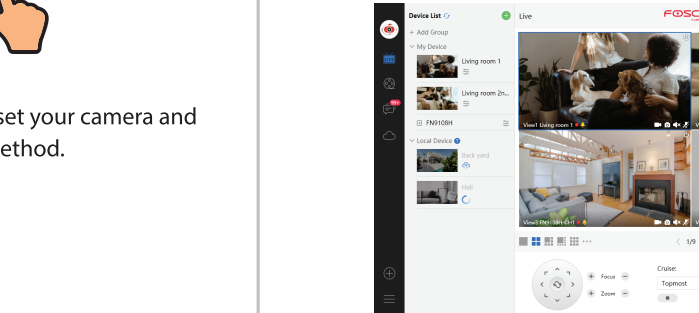
<https://apps.apple.com/cn/app/foscamvms/id1521202507?mt=12>

Note: For the best experience, please update Foscam VMS to the latest version!

Add the IP Camera

1. Run Foscam VMS, then create a local administrator account or a Foscam account and login.
2. Tap the "+" icon on the Foscam VMS and follow the setup wizard to add your camera.

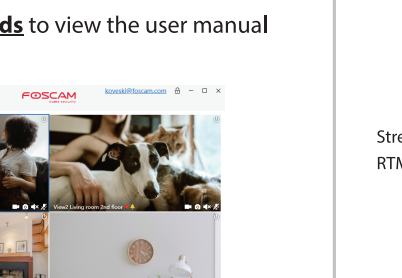
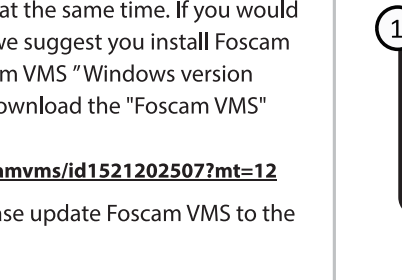
Please visit foscam.com/downloads to view the user manual and for additional detailed steps.



5 Live Broadcast Setting

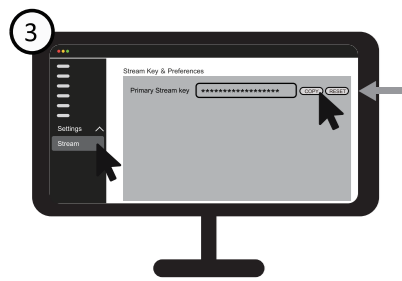
Get RTMP URL & Stream Key

YouTube:



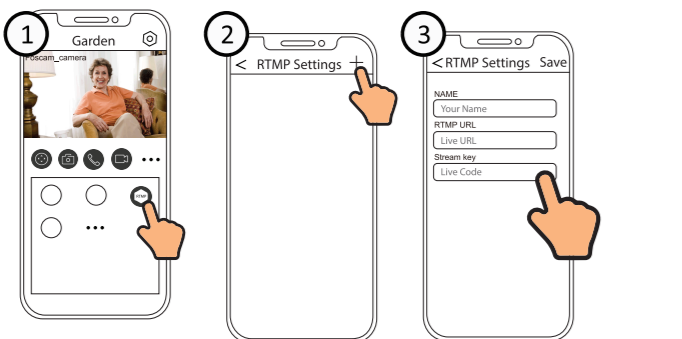
Twitch:

1 RTMP URL: <rtmp://live.twitch.tv/app/>

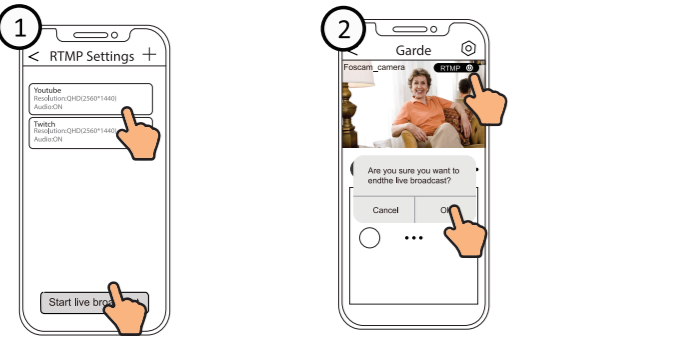


APP live streaming settings

Input RTMP URL & Stream Key



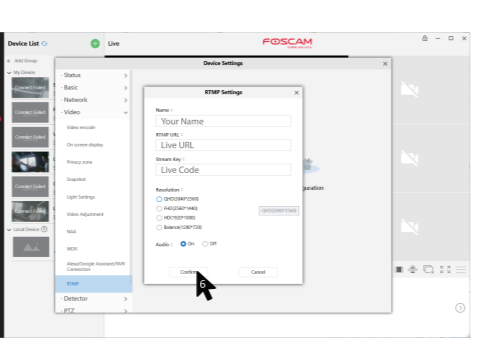
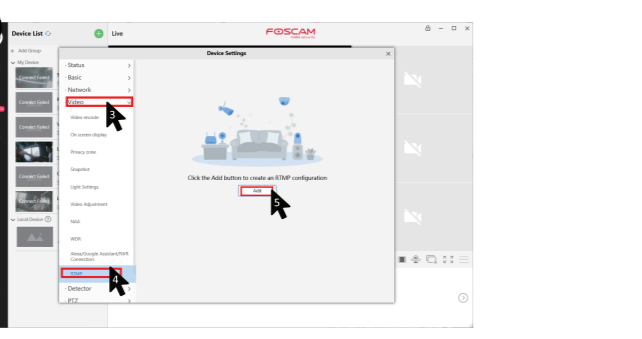
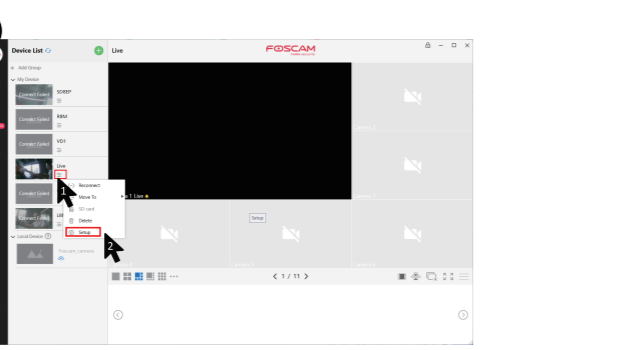
Start/End Live Broadcast



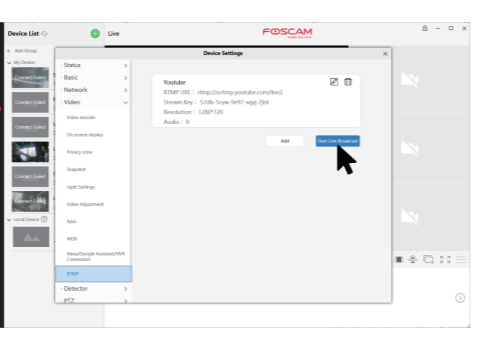
Start Live Broadcast End Live Broadcast

VMS live streaming settings

Input RTMP URL & Stream Key

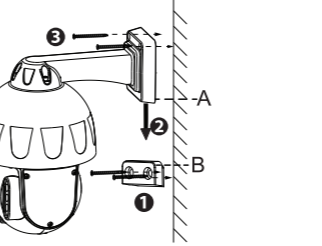


Start/End Live Broadcast

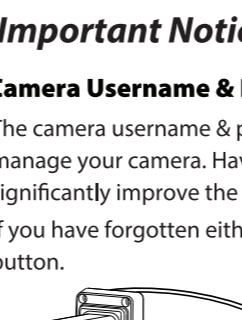


Start Live Broadcast

6 Hardware Installation



1. Screw the mount on the wall with the two screws provided.
2. To attach the camera base A to the mounting bracket B, insert the base into the bracket as pictured.
3. Screw the camera to the wall with the two screws provided.

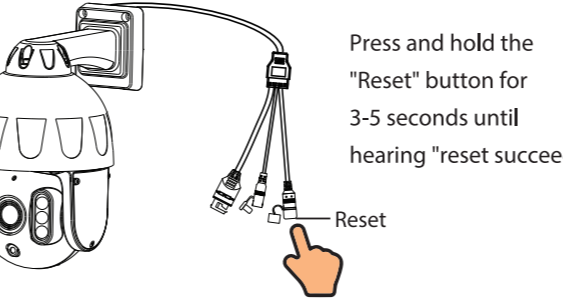


End Live Broadcast

7 Important Notice

Camera Username & Password

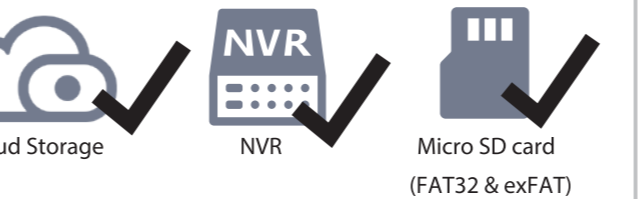
The camera username & password are used to access and manage your camera. Having a strong password can significantly improve the security of your camera. If you have forgotten either of them, please press the "Reset" button.



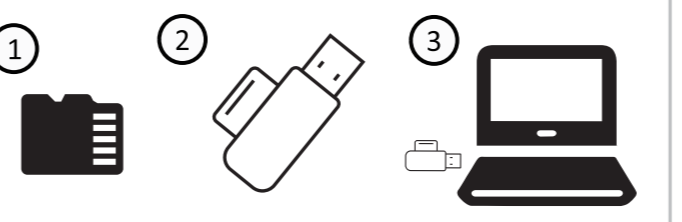
Press and hold the "Reset" button for 3-5 seconds until hearing "reset succeed".

Storage Media

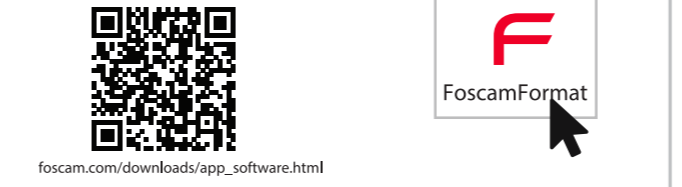
Your camera supports cloud, NVR (Network Video Recorder), and Micro SD card (supports FAT32 and exFAT) storage formats.



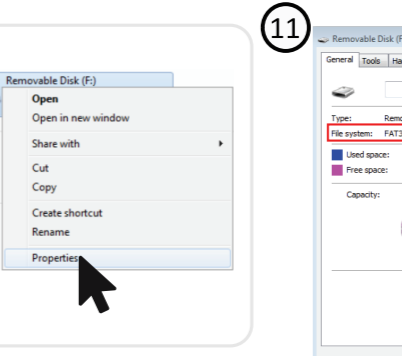
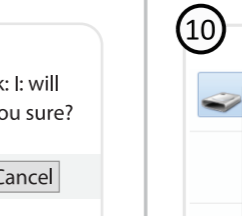
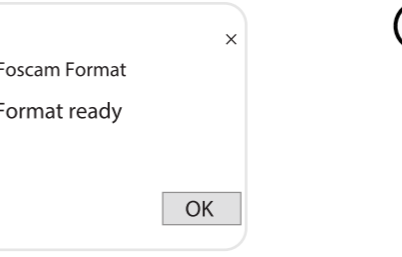
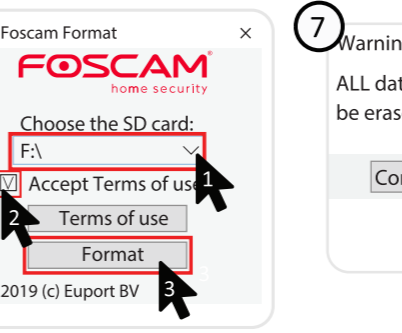
How to format Micro SD card, please follow the steps below:



4. Scan the QR code below to download the "FoscamFormat" Tool
5. Open the "FoscamFormat" Tool



foscam.com/downloads/app_software.html



8 Product Performance

Power Supply: DC 12V 2.0A 24W (Not included)

9 FAQs

- Q1: Does it come with power supply? how to connect to power?
A: It does not come with a power supply. You must add a POE (Power Over Ethernet) injector. Power is then supplied from the POE injector to the camera through the ethernet cable.
- Q2: Does the camera require wifi ?
A: It's a POE camera. Power Over Ethernet. It requires an ethernet cable that delivers power and a signal to your LAN. You need a switch or router capable of delivering POE.
- Q3: Specification of Ethernet Cables that PoE Cameras Require
A: PoE cameras support T-568B connectors and CAT5, CAT6, CAT7 with 8PIN Ethernet cable.
- Q4: Can this be powered with a battery pack in case of power outage or tampering?
A: It's powered through the Ethernet cable from your NVR. If you put your NVR on UPS the camera will stay powered as long as the NVR is powered on.



CE Certificate statement Website:
<https://www.foscam.com/company/ce-certificate.html>

Exporter and Importer Information Opened to Public:
<https://www.foscam.com/company/open-information.html>

Manufacturer: Shenzhen Foscam Intelligent Technology Co., Ltd
Addr: Room 902, Building 1B, Shenzhen International Innovation Valley, Xingke 1st Street, Nanshan District, Shenzhen, Guangdong, China, 518055
Support email: support@foscam.com



www.foscam.com

Due to product upgrades and other reasons, this guide may be slow to update, resulting in slight inconsistencies with the official website information. Please take the official website (www.foscam.com) information as the current standard.